

Truepress 344

Digital offset press



Creating a Future in Print

Advanced automation and new processless plate technology are just two of the unique features of this high-performance A3 digital press.



High quality and throughput

Excellent print quality

The Truepress 344 is a unique digital press using the traditional wet offset printing process to create high-quality prints on a wide range of substrates. In addition, the first generation digital dot ensures that optimal image quality is transferred directly to the plate, ensuring high color quality in print and registration. All of the features of the Truepress 344 are designed to suit the on-demand printer without compromising print quality or limiting the types of substrates that can be used.



Great productivity through better imaging

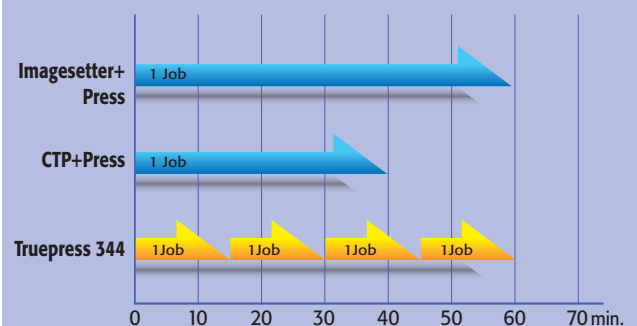
Job changeover is a fully automated process. Plates are imaged simultaneously, blankets are cleaned, the feeder unit is set and ink ducts are calibrated using the printing image data. In just over seven minutes the press is ready to start the next job. TrueFit Advance minimizes run-up time, so optimum print quality is

reached with fewer waste sheets. With high running speeds of up to 7,000 sheets per hour, the number of jobs per working day is exceptionally high.

Variable plate support

The Truepress 344 makes it easy for a single designated plate to be replaced with a new one. The most typical example of this would be replacing just the black plate, so that the text information is altered for a language variation. In such a case, the user is assured of accurate registration and fit.

Comparison during actual production (A3, four-color, 500 sheets)



Easy maintenance

The Truepress 344 requires less time and effort for standard maintenance, thanks to automated cleaning of blankets, and

The Truepress 344 is an A3 four-color digital offset press that incorporates the latest in innovative imaging and plate technology, as well as state-of-the-art automation and quality control.

This remarkable digital press uses the latest processless thermal plates, which do not require chemical processing, thus setting new ecological standards for printing technologies. Using a new, innovative MALD (Multi Array Laser Diode) imaging head that can expose four printing plates simultaneously within four thirty seconds, plate imaging with the Truepress 344 is remarkably fast.

The Truepress 344 is an A3 four-color offset press that prints 7,000 impressions per hour. Printing with the conventional wet offset process ensures high print quality and flexibility, plus economical running costs by using traditional inks and paper.

Automatic feeder setup enables the operator to print everything from postcards and envelopes (minimum size 90 mm x 148 mm [3.6" x 5.9"]) to A3 size (340 mm x 470 mm [13.4" x 18.5"]) papers.

The Truepress 344 is fitted with TrueFit Advance, an automatic print quality management system that assists in controlling ink key and dampening solution levels throughout the print run to assure consistently high quality with minimal operator intervention.

dampening solution rollers. In addition, the twin printing tower design gives the operator fast and easy access to all areas of the press.

Optimised running costs

Compared to other digital presses, a number of factors make the Truepress 344 unique in its cost of operation. Printing with standard inks and paper, plus the use of chemical-free plate processing, provides a low consumable cost. Coupled with the potentially high number of jobs per workday, this ensures that the cost per job at run lengths of 100 to 5,000 sheets is very competitive.

Remote monitoring system

The remote monitoring system sends e-mails regarding the Truepress 344's operating status, as well as information about any errors that occur, to the service center. The service center analyzes the operating status and error data and saves it into a database that can be used during maintenance and periodic inspections to ensure that the Truepress 344 is always operating in an optimal state.

Environmentally and ecologically safe

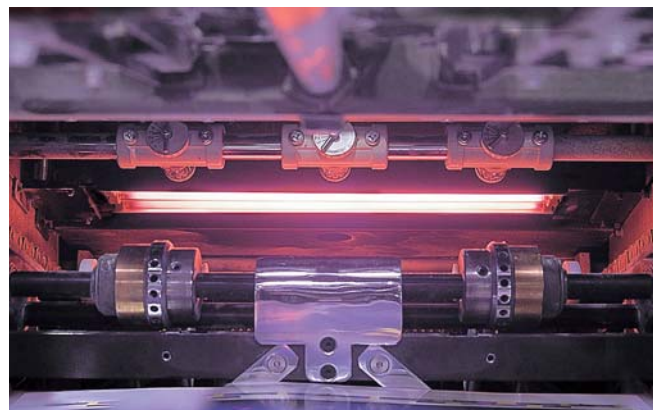
In addition to the obvious benefits of cost savings, shorter processing times and safety, reducing the use of corrosive chemicals creates a safer working environment and complies with stricter government regulations.

Compact and robust design

Quality is a critical feature of the Truepress 344. Built on a 4.5 cm (1.7") thick metal frame, the machine's sturdiness reflects the quality of manufacturing. From the inking and dampening train to the transfer and cylinder units and the on-press imaging unit, all aspects of the Truepress 344 were designed with stability and durability in mind, providing reliability and performance comparable to any other high-quality press.

IR drying unit

Fitted with an optional inline IR drying unit, the Truepress 344 can attain a faster turnaround time for verso printing or finishing. Depending on the type of substrate or ink coverage, the IR dryer can be a key asset in providing an on-demand service.



Easy operation through advanced automation and quality control systems

Easy setup and consistent quality control with TrueFit Advance

TrueFit Advance is an automatic print quality management system that provides real-time analysis of ink levels that is operated through an easy-to-use touch screen located at the delivery end of the press.

Calibrated to the data from the printing image data, the system cross-references the original file data to provide accurate setup. Thereafter, TrueFit Advance scans and analyzes printing data every six sheets. Based on the analyses, it assists in adjusting ink keys and water dampening supply levels to ensure consistent quality from the beginning to the end of the print run. TrueFit Advance can also store job data from a previous job, making it possible to recall the data and get a repeat job up and running in less time.

Operating the press

The Truepress 344 is designed so that one operator can manage the entire operation from workflow to printing. Advanced automation means that operation is efficient and easy, enabling press operators of varying skill levels to achieve consistently high-quality results.

Automatic paper positioning

In addition to its other advanced automation systems, the Truepress 344 features a new automatic paper positioning adjustment system that makes for easier operation. The operator simply enters the paper thickness, type, and size on the central command console, and the system calculates the adjustments specific to the substrate characteristics.

Shorter makeready and startup

Fast job changeover is a key feature of this print-on-demand press. The printing image data is analyzed by the system to automatically preset ink keys for each new job. Optimum run quality is attained with fewer waste sheets.



Color density management using target image areas

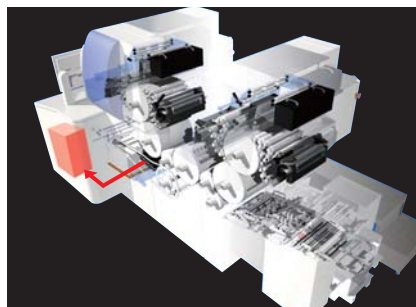
The color density management scanner measures representative points across the image automatically, or the operator can use a touch screen to manually override the selection in order to choose whichever points he wishes. The scanned image data is fed back to the control unit and analyzed for ink and water adjustment. This unique color management system ensures high quality and consistency of output.

Easy control of dampening solution

TrueFit Advance uses a unique data control strip to assess the amount of dampening water required for the optimum balance of ink and water. A unique algorithm calculates and maintains dampening solution levels at the settings made by the operator. This easy to use system ensures proper emulsification and more consistent halftone dot reproduction. Maintaining appropriate dampening solution levels also results in faster drying times.



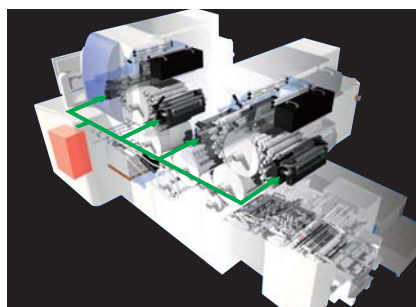
1. Ink densities and dampening solution levels are measured as sheets come out of the Truepress.



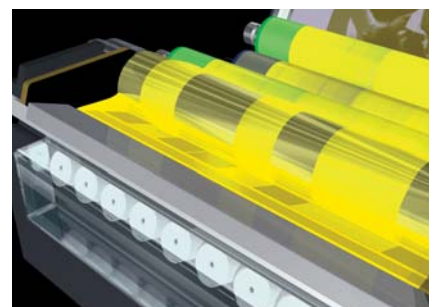
2. TrueFit Advance monitors ink densities and dampening solution levels in real time during the print run.



3. Current density readings are compared to target levels.

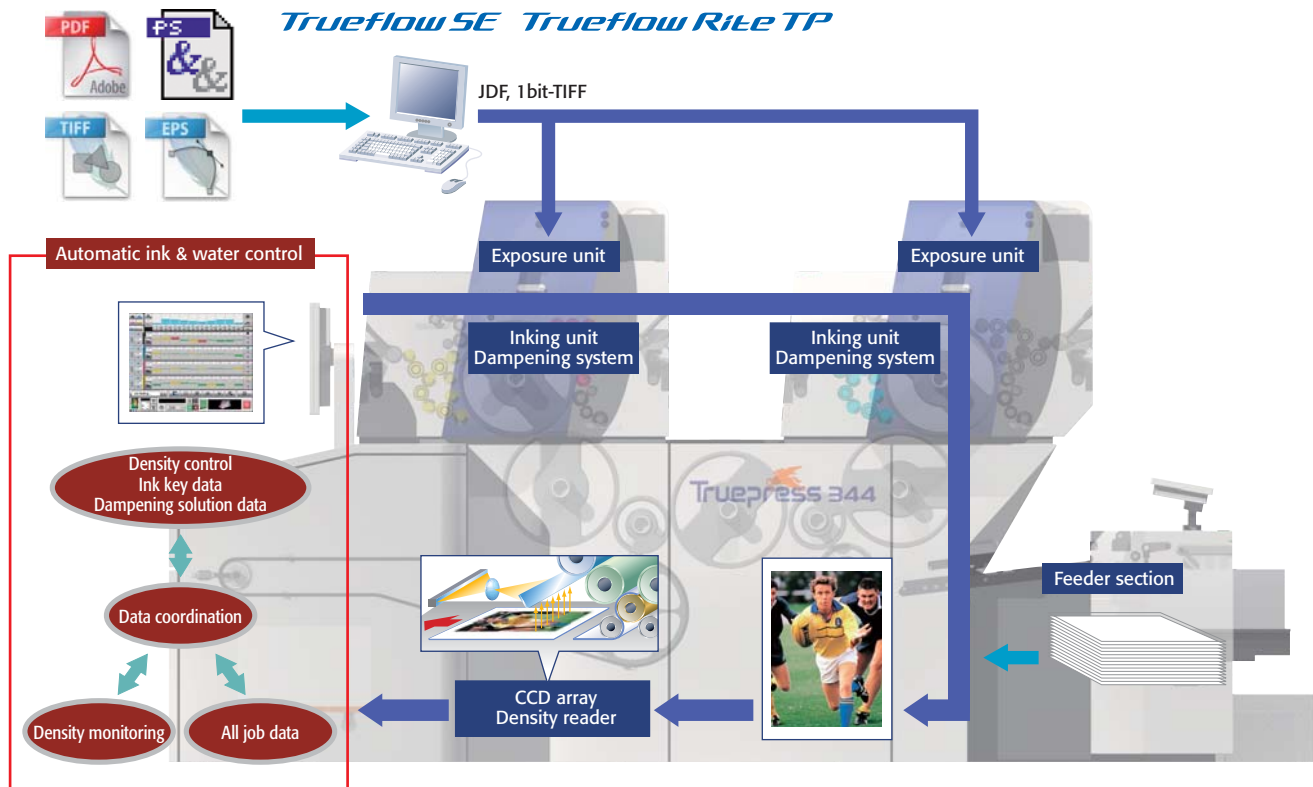


4. Ink key settings are adjusted immediately, and dampening solution levels, set by the operator are maintained automatically.



5. A consistent ink-water balance is achieved.

Truepress working with TrueFit Advance



Traditional ink density management

The operator extracts sheets at points in time (**A**, **B**, and **C**) during printing. The measured density is compared with the target density.

At **A**, the density is too high, so it must be reduced.

At **B**, the density matches the target.

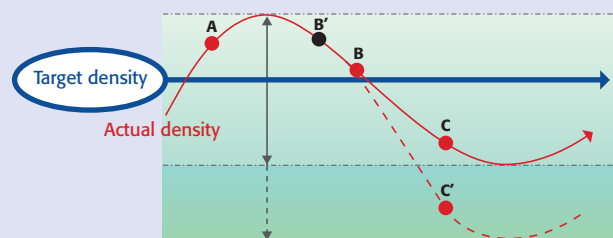
At **C**, the density is too low, and must be increased.

The ink keys are adjusted as necessary at each point in time. Unfortunately, measuring a single sheet that has been pulled from the press does not provide information about trends in ink density. For example, if a sheet were pulled and measured at time **B'**, the operator would make settings to decrease density, despite the fact that the density is already decreasing, since the instantaneous density at time **B'** is too high. This would drive the density even lower by time **C'**.

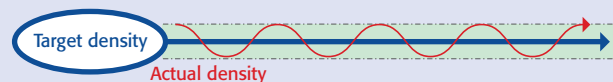
Ink density management with TrueFit Advance

TrueFit Advance's color management differs greatly from manual operation of traditional ink density management, which involves arbitrary timing of density measurement and relies on the intuition of the operator. TrueFit Advance monitors the ink and dampening solution levels regularly and in real time, while taking into account the historical measurements to evaluate trends over time. This assists in the appropriate timing for adjustments and results in highly accurate and consistent ink density control.

Traditional ink density management



Ink density management with TrueFit Advance



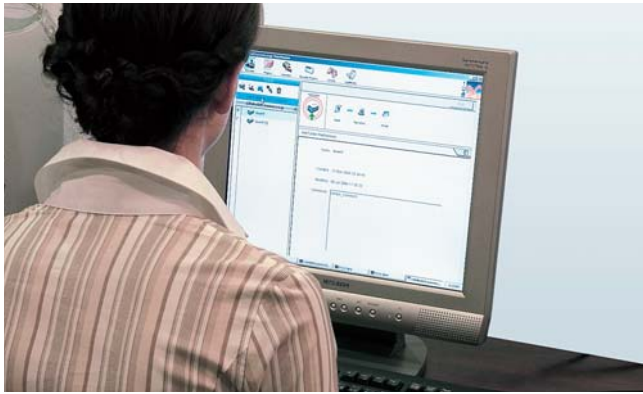
As simple as a network printer

Superior results with 1-bit TIFF

The Truepress 344 is independent of the upfront workflow as it accepts 1-bit TIFFs as input data. 1-bit TIFF data is ideal for four-color printing separations, since it assures that output will match the intent of the designer, including the fonts and image resolution.

Compatible with the reliable Trueflow system

Screen's Trueflow, which has received rave reviews for its CtP workflow, has recently introduced a new entry-level model: Trueflow Rite TP. In addition to handling the latest PDF files, Trueflow Rite TP can output 1-bit TIFF, making it the ideal RIP for a workflow that includes the Truepress 344. Of course, any other RIP that creates 1-bit TIFFs can be used with the Truepress 344 as well.



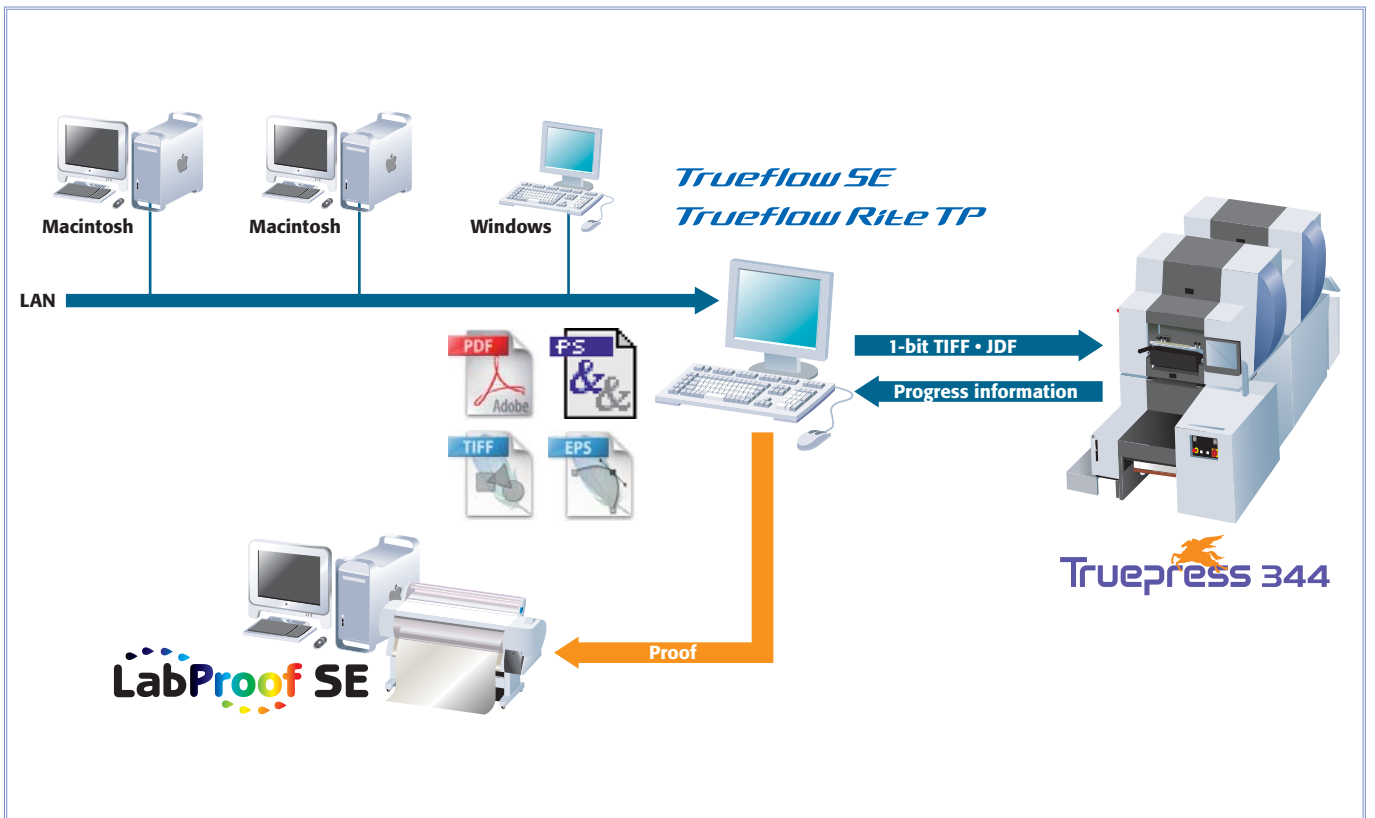
Increased efficiency with JDF

JDF is also supported in the Truepress 344 workflow. JDF is a format that allows various instructions related to a printing job to be transmitted to the appropriate processes. JDF data can be used to reduce print setup times and paper spoilage.

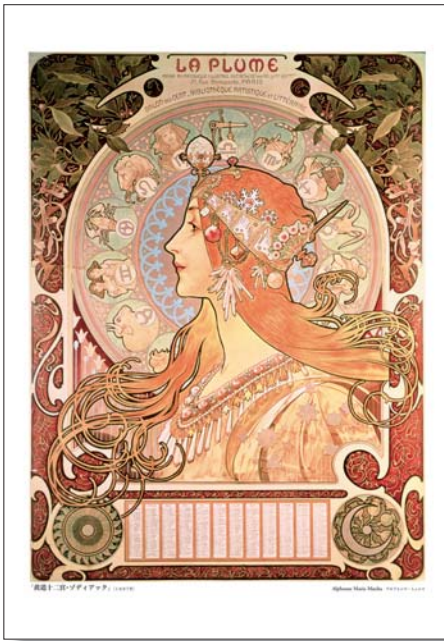
Options

The Truepress 344 can be equipped with several optional systems that increase productivity and quality.

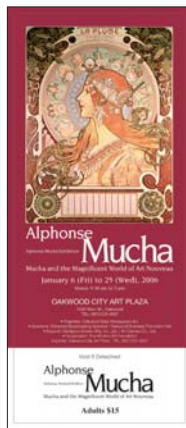
Screening: Spekta 2 AM/FM hybrid screening is a widely acclaimed quality screening that produces outstanding quality. As a key element of Screen's success in CtP technology, Spekta 2 offers Truepress 344 users this unique screening to provide even higher quality results.



The ideal solution for your business



Art Print



Ticket



Direct Mail



SP Tool (Pamphlet)



Leaflet



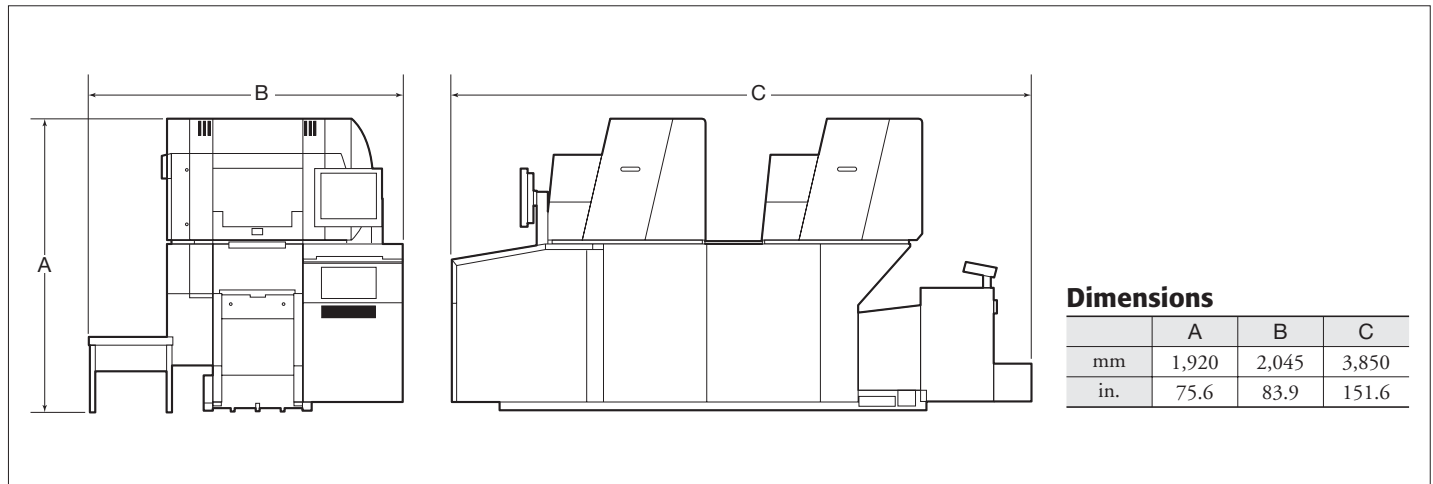
The Truepress 344 has a wide appeal for a variety of printing segments.

The Truepress 344 is an offset press that offers digital processing of everything from platemaking to printing in a single, high cost-performance unit. It offers all the advantages of digital printing, and is flexible enough for a wide variety of uses.

For example, this powerful production tool can be used to create everything from direct mailing materials to CD and DVD jackets, tickets, leaflets, catalogs, and printed art. Its use of traditional printing methods provides the superior quality of wet offset printing, and its high-speed output enables high productivity, making it flexible enough to meet a wide variety of customer needs.

The Truepress 344 is ideal for today's world of multi-use, short turnaround, small lot printing. It has the potential to open up a whole new world of opportunities for everyone from printing companies, platemaking companies, and print shops to universities, government and public institutions, and industry companies.

Space requirements



Truepress 344 (TP344N) specifications

Light source	MALD (Multi Array Laser Diode)
Plate	Processless thermal plates
Printing area	Max. 330 x 460 mm (13" x 18.1")
Paper stock size	90 x 148 mm (3.5" x 5.8") to 340 x 470 mm (13.4" x 18.5")
Paper stock thickness*1	0.05 to 0.4 mm (2 to 15.7 mil) [can print envelopes]
Max. printing speed	Up to 7,000 sheets/hour
Automatic functions	Ink key control, inline density detection and output function (TrueFit Advance), dampening solution level controls, plate loading/unloading, blanket cleaning, ink roller cleaning, dampening solution roller cleaning, paper presets, paper registration
Oil supply	Concentrated oil (manual pump up)
Dimensions (W x D x H)*2	2,045 x 3,850 x 1,920 mm (80.6" x 151.6" x 75.6")
Weight	4,960 kg (10,912 lb)
Power requirements	Three phase 380V/400V/415V, 15A, 8kW
Heat production	30,000 kJ (7,200 kcal)
Options	Dampening solution circulation system (required option), RIP, compressor, IR drying unit, push side guide registration unit

*1 The paper thickness that can be handled may vary with printing conditions, environment, ink, and paper type.

*2 1,000 mm (39.4") clearance around the unit, and 400 mm (15.8") clearance above it, is required for the placement of optional systems and for maintenance purposes.

DAINIPPON SCREEN MFG. CO., LTD.

HEAD OFFICE

• Teranouchi-agaru 4-chome, Horikawa-dori, Kamigyo-ku, Kyoto, 602-8585 Japan/Phone +81-75-414-7610/Fax +81-75-414-7608

SCREEN (USA)

• 5110 Tollview Dr., Rolling Meadows, IL 60008, USA/Phone 847-870-7400/Fax 847-870-0149 www.screenusa.com

DAINIPPON SCREEN (DEUTSCHLAND) GmbH

• Mündelheimer Weg 39, 40472 Düsseldorf, Germany/Phone 0211-472701/Fax 0211-4727199/Telex 858-4438 DSDD D

DAINIPPON SCREEN (U.K.) LTD.

• Michigan Drive, Tongwell, Milton Keynes, Buckinghamshire MK15 8HT, UK/Phone 01908-848500/Fax 01908-848501 www.screen.co.uk

DAINIPPON SCREEN (NEDERLAND) BV

• Bouwerij 46, 1185 XX Amstelveen, Holland/Phone 020-4567800/Fax 020-4567805 www.screen europe.com

SCREEN FRANCE

• 21, Paris Nord II, 12 Rue des Chardonnerets, B.P. 50315, F-95940 ROISSY C.D.G. Cedex, France/Phone 1-48-17-86-00/Fax 1-48-17-86-01

DAINIPPON SCREEN SINGAPORE PTE. LTD.

• 29, Kaki Bukit View, Kaki Bukit Techpark II, Singapore 415963/Phone 67493833/Fax 67499010 www.screensp.com.sg

DAINIPPON SCREEN (CHINA) LTD.

• 6th Floor, 414 Kwun Tong Road, Kwun Tong, Kowloon, Hong Kong/Phone 2953-0038/Fax 2755-8683

• Beijing office/Phone 010-6708-9271, 9272, 9273/Fax 010-6708-9395

• Shanghai office/Phone 021-6466-4501/Fax 021-6466-4503

• Guangzhou office/Phone 020-3891-1112/Fax 020-3891-1036

DAINIPPON SCREEN (TAIWAN) CO., LTD.

• 4F No. 126-1, Ming Tsu West Rd., Taipei, Taiwan/Phone 02-25862711/Fax 02-25914367

DAINIPPON SCREEN (KOREA) CO., LTD.

• 10th Yonsei Bongnae B/D 48-3, 1Ga, Bongnae-Dong, Joong-Gu, Seoul 100-161, Korea/Phone 02-7766-786/Fax 02-7766-787

DAINIPPON SCREEN (AUSTRALIA) PTY. LTD.

• Unit 2, 207-209 Young Street, Waterloo, NSW 2017, Australia/Phone 02-9310-1314/Fax 02-9310-3566

Internet web site : www.screen.co.jp

www.screenusa.com

www.screen europe.com

- This brochure was made using Spekta 2 screening.
- Printed on recycled paper.

We reserve the right to alter product design and specifications without prior notice.